



MAP - GUIDE

XOVE

HERITAGE

A milenary land

The toponym of Xove comes from the name of Latin origin Ionius, from the genitive form Iovii, Jupiter, the main god of Roman mythology. This is the reason why it is believed that after the conquest, the Romans erected a temple of sufficient importance in these lands to give a name to the municipality. The many prehistoric sites identified on its territory prove that Xove has been inhabited for more than 4,000 years. Highlights include the lithic circle of Lavandeiray, the Mámoa de Guilán, the tumuli or the Castro de Vilar in Xuanes, where an annular roman bronze fibula was discovered.

The first writings about Xove date from the eighth century, during the reign of King Alfonso I, when the deacon Rodrigo de Coimbra left a will dated April 28, 787 in which he passed on two double monasteries he had founded: one in Santo Estevo de Sumoas, and another in San Tirso de Portocelo. This monastic model that brought together communities of monks and nuns under the same authority, was very common at the beginning of Christianity and served to consolidate the region after the reconquest begun by the Asturian kings.

During the Middle Ages the territory of Xove, formed by the jurisdictions of Portocelo, Galdo and Viveiro belonged to the ecclesiastical circumscription of Mondoñedo, the Episcopal See since 1111. Xove appears as Town Hall in the first half of the nineteenth century when it is integrated into the province of Lugo in 1822.

CRONOLOGY

- 4.000 b.C. First settlers
- 3.000 b.C. Petroglyph of Monte
- 2.000 b.C. Lithic circle of Lavandeiras
- C. I-IV a.C. Roman bronze necklace
- C. VIII a.C. First written reference about Xove
- 1.111 a.C. Bishopric Seat
- 1.822 a.C. Council of Portocelo
- 1.878 a.C. Tomás Mariño: airship
- 1.940 a.C. Council of Xove

RUINS OF SAN TIRSO

Settled around 1200 BC. On this fort, the deacon Rodrigo de Coimbra built a monastery there in the eighth century, which maintained its monastic status until 1156. On the remains of this monastery, a hermitage was built in the seventeenth century, it functioned as the parish church of San Tirso de Portocelo until 1929. Given the great historical and heritage value of this place, a first archaeological prospecting of the castro was carried out in 2020. The resounding success led to the projection of new phases of excavations.

ROUTES

A way to feel nature

With more than 7 routes and a distance of more than 100 km, Xove presents a wide variety of possibilities to enjoy nature. From simple walks to more demanding trails, our town has a great diversity adapted to the capacities of each user. From coastal paths and long-distance routes to ethnographic walks, paths to unusual waterfalls or simply adventures in a magical walk between fairies and mills.

COASTAL PATH

Distance: 18km
Time: 3.5h
Difficulty: Intermediate
MTB: Yes

It starts at the ethnographic area of Morás and ends at the access to Portonovo beach. The route runs along old coastal fishing trails very close to the sea. It shares some sections with the Route of Natural Trails of Cantabria.



TRAIL OF THE MILLS

Distance: 7km
Time: 1.5h
Difficulty: Low
MTB: Yes

This route runs along the banks of the Rigueira River, the main watercourse of the municipality. It takes its name from the large number of mills present (9). We will also find nine stone bridges and eight wooden bridges.



PAU DA VELLA TRAIL

Distance: 11,2km
Time: 2.5h
Difficulty: Intermediate
MTB: Yes

The central point of the route is mount of Pau da Vella, where four municipalities (Xove, Viveiro, Cervo and Ferreira Do Valadouro) meet, giving the trail its name. The route runs along the communal roads and pastures of Lasamouira.



GUILÁN WATERFALL

Distance: 5,7km
Time: 1.5h
Difficulty: Intermediate
MTB: Yes

Circular route whose main landmark is the Guilán waterfall (70m), located on the river of the same name. It is a route of moderate difficulty parallel to the coast. It offers extraordinary views of the valley and the coast.



ALL OUR ROUTES
Find more information in our web and wikiloc profile. Dive into our multiple options.

ACTIVE TOURISM



A BALEA VERDE
Kayak rental, hiking and snorkeling on Morás beach

RONCADIOIRO E-BIKE
Rental and routes in E BIKE along the North Coast of Galicia. Tailor-made routes for families or small groups

FAIR PATH

Distance: 1km
Time: 20 min
Difficulty: Low
MTB: Yes

This path is on the route of the Chemin des Moulins. In this area, hidden in the hollows of some trees, are the doors of the houses of fairies and elves.



DIGITAL MAPPING
ONE MAP, ENDLESS OPTIONS



PANORAMA POINTS

A 360° view of our top landmarks

PAPER CLIFFS

Running along the shore from Cape Morás to Punta Roncadioira, those cliffs that are one of the most splendid and surprising places in northern Galicia.

SARÓN ISLAND

The official name of the island is Ansarón, locally known as Sarón. The island is 83 meters above sea level and ten hectares, making it one of the largest in province of Lugo.

MONTE CASTELO VIEWPOINT

This cliff of 133 meters above sea level offers us a splendid panoramic view of the Cantabrian Sea. Its toponym indicates the existence of a medieval fortification, of which no archaeological evidence remains.

PAU DA VELLA

The peak of Pau da Vella is the highest point of the municipality of Xove with 704 meters above sea level, located in the Mountains of Buio. The landscape is mainly composed of grasslands.

MORE INFORMATION



BIRDING

One of the best location for birding and wildlife observation in Europe

MAIN SPECIES

- | | |
|------------------------|---------------------------|
| Northern gannet | Mascato bassanius |
| Lesser black gull | Larus fuscus |
| Bar-tailed godwit | Limosa lapponica |
| Eurasian oystercatcher | Haematopus ostralegus |
| European shag | Phalacrocorax aristotelis |
| African stonechat | Saxicola torquatus |
| Northern wheatear | Oenanthe oenanthe |



With more than 2168 ha of ZEPA (Special Protection Area for Birds), the coast of Xove is, due to its geographical location, one of the best areas of the European continent for bird watching, and especially migratory birds. Among the local birds, we will find a particularly valuable species, the pied oystercatcher, that nests on some of the islands in the region. More abundant are the yellow-legged gulls, which number in the hundreds, and cormorants, which are rarer. In winter, we can see up to seven different species of gulls in addition to other seabirds passing by such as the Northern Gannet.

MORE INFORMATION



ORNITOLOGICAL ROUTES

URBAN XOVE

All you need is here

COMMERCIAL ACTIVITIES

- Hardware store
- Healthy services
- Bookstore
- Fashion
- Supermarket
- Fish shop
- Butcher shop
- Consulting
- Bank
- Furniture store
- Bakery
- Motorbike Mechanic
- Bar / Restaurant
- Beauty salon



POINTS OF INTEREST

- Tourist Office
- Church
- City Hall
- Social Center
- Train Station
- Nursing Home
- Post Office
- Bus
- Hospital
- School
- Pool
- Padel court
- Kids Park
- Kids School
- Taxi

BEACHES

A surf paradise

- BEACH OF ESTEIRO**
Length: 400m Type: Sand
Services: Showers / WC / Tourist Office
Disability access: Yes
Parking: Cars / Motorhome / Camper
- BEACH OF PORTOCELO**
Length: 250m Type: Sand
Services: Showers / WC
Disability access: yes
Parking: Cars
- BEACH OF PORTIÑO DE MORÁS**
Length: 80m Type: Sand
Services: Showers / WC / Fountain
Disability access: Yes
Parking: Car
- BEACH OF LAGO**
Length: 650m Type: Sand
Services: Showers / WC
Disability access: Si
Parking: Cars
- BEACH OF MUIÑELO**
Length: 120m Type: Sand
Services: No services
Disability access: No
Parking: Cars
- BEACH OF COVA**
Length: 70m Type: Sand
Services: No Services / Pet Friendly
Disability access: No
Parking: Cars



DISCOVER MORE

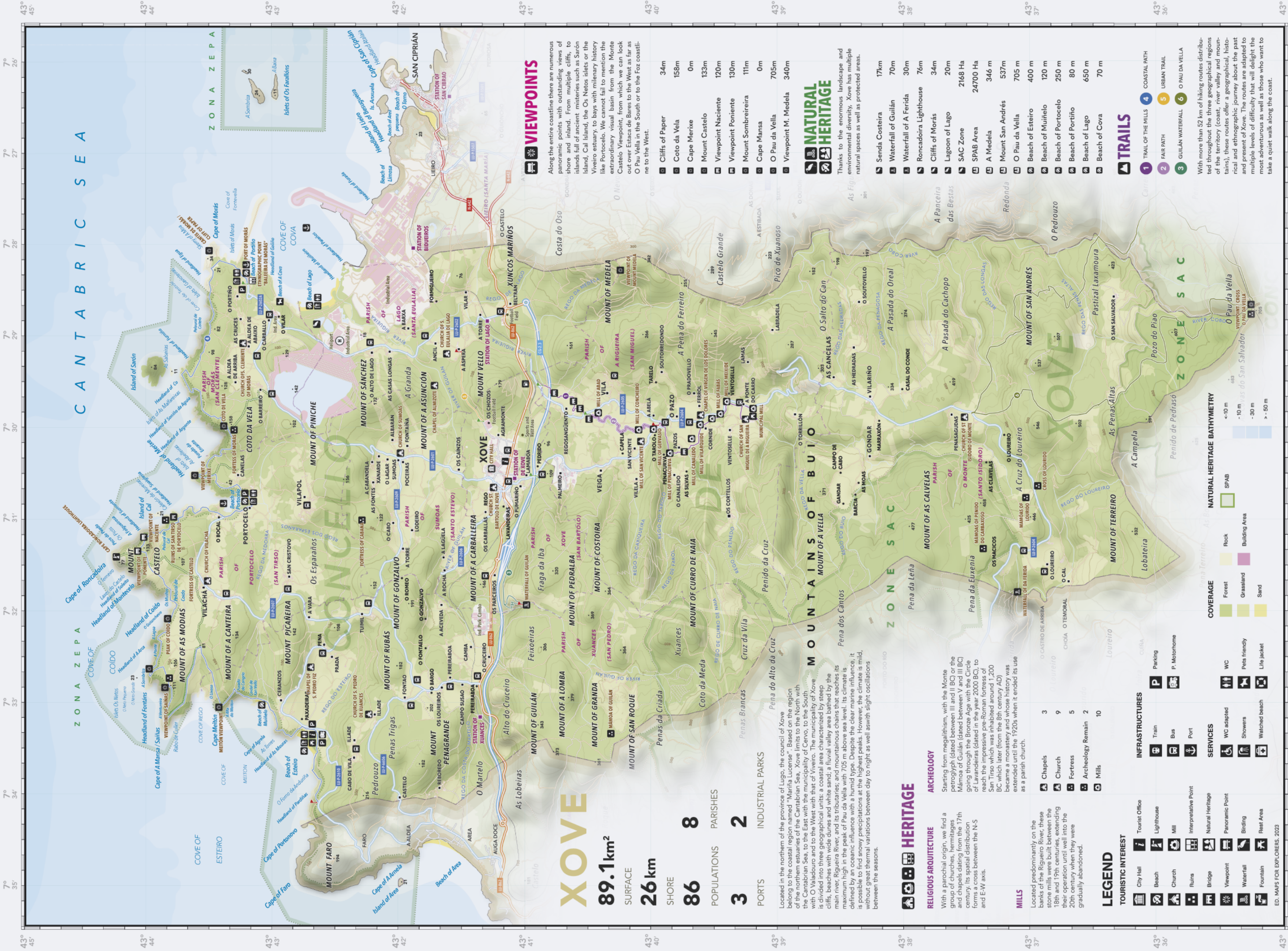
All the information related to our beaches and coast





MUNICIPALITY OF XOVE

MUNICIPAL CARTOGRAPHY
SCALE 1: 30.000



XOVE

89.1km²

SURFACE

26km

SHORE

86

POPULATIONS

3

PORTS

INDUSTRIAL PARKS

PARISHES

2

8

VIEWPOINTS

17km

70m

30m

76m

34m

20m

2168 Ha

24700 Ha

346 m

537m

705 m

400 m

120 m

250 m

80 m

650 m

70 m

TRAILS

COASTAL PATH

URBAN TRAIL

GUILÁN WATERFALL

O PAU DA VELLA

Located in the northern of the province of Lugo, the council of Xove belongs to the coastal region named "María Lucense". Based on the region of the northern estuaries of the Cantabrian Sea, Xove limits to the North with the Cantabrian Sea, to the East with the municipality of Cervo, to the South with O Valadouro and to the West with that of Viveiro. The municipality of Xove is divided into three geographical units: a coastal area characterized by steep cliffs, beaches with tide dunes and white sand; a fluvial valley area bathed by the main river, Riquero River, and its tributaries; and mountainous chains that reaches its maximum high in the peak of Pau da Vella with 705 m above sea level. Its climate is defined by an oceanic influence with a humid type. Despite the clear marine influence, it is possible to find snowy precipitations at the highest peaks. However, the climate is mild, without great thermal variations between day to night as well as with slight oscillations between the seasons.

HERITAGE

RELIGIOUS ARCHITECTURE

With a parochial origin, we find a group of churches, hermitages and chapels dating from the 17th century. Its spatial distribution forms a cross between the N-S and E-W axis.

MILLS

Located predominantly on the banks of the Riquero River, these stone mills were built between the 18th and 19th centuries, extending their operation until well into the 20th century when they were gradually abandoned.

LEGEND

TOURISTIC INTEREST

- City Hall
- Beach
- Church
- Ruins
- Bridge
- Viewpoint
- Waterfall
- Fountain
- Tourist Office
- Lighthouse
- Mill
- Interpretative Point
- Natural Heritage
- Panoramic Point
- Birding
- Rest Area
- Train
- Bus
- Port
- WC adapted
- Showers
- Watched beach
- Motorhome
- Pets friendly
- Life jacket

INFRASTRUCTURES

- Train
- Bus
- Port
- WC
- Showers
- Watched beach
- Motorhome
- Pets friendly
- Life jacket

SERVICES

- WC adapted
- Showers
- Watched beach
- Motorhome
- Pets friendly
- Life jacket

COVERAGE

- Forest
- Grassland
- Sand
- Rock
- Building Area

NATURAL HERITAGE BATHYMETRY

- < -10 m
- 10 m
- 30 m
- > -50 m

VIEWPOINTS

Along the entire coastline there are numerous panoramic points with outstanding views of shore and inland. From multiple cliffs, to islands full of ancient mysteries such as Sarón Island, Cal Island, the Os Neos islets or the Viveiro estuary, to bays with milenary history like Portocelo. We cannot fail to mention the extraordinary visual basin from the Monte Castelo Viewpoint, from which we can look out over Estaca de Bares to the West as far as O Pau Vella in the South or to the Foz coastline to the West.

- Cliffs of Paper 34m
- Coto da Vela 158m
- Cape Merize 0m
- Mount Castelo 133m
- Viewpoint Naciente 120m
- Viewpoint Poniente 130m
- Mount Sombreira 111m
- Cape Mansa 0m
- O Pau da Vella 705m
- Viewpoint M. Medela 340m

NATURAL HERITAGE

Thanks to the enormous landscape and environmental diversity, Xove has multiple natural spaces as well as protected areas.

- Senda Costeira 17km
- Waterfall of Guilán 70m
- Waterfall of A Ferida 30m
- Roncadoira Lighthouse 76m
- Cliffs of Morás 34m
- Lagoon of Lago 20m
- SAC Zone 2168 Ha
- SPAB Area 24700 Ha
- A Medela 346 m
- Mount San Andrés 537m
- O Pau da Vella 705 m
- Beach of Esteiro 400 m
- Beach of Muínelo 120 m
- Beach of Portocelo 250 m
- Beach of Portiño 80 m
- Beach of Lago 650 m
- Beach of Cova 70 m

TRAILS

- TRAIL OF THE MILLS
- FAIR PATH
- GUILÁN WATERFALL
- COASTAL PATH
- URBAN TRAIL
- O PAU DA VELLA

With more than 52 km of hiking routes distributed throughout the three geographical regions of the territory (coast, river valley and mountains), these routes offer a geographical, historical and ethnographic journey about the past and present of Xove. The routes are adapted to multiple levels of difficulty that will delight the most adventurous as well as those who want to take a quiet walk along the coast.